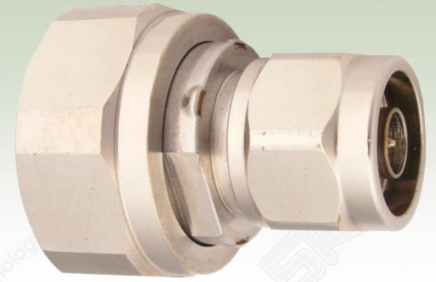


Din Male to N Male adaptor

P.N. : B54-A1105-01



Electrical specification

Item	Specification
Frequency range(MHz)	DC ~ 6 GHz
Impedance (Nominal)	50Ω
V.S.W.R (Max)	1.20 : 1
Insertion Loss	-0.2 dB
Connector type	Din male – N male

Material specification

Item	Specification
Body	Brass / Nickel plating
Center contact (pin)	Be-cu / Ag plating
Insulator	PTFE

