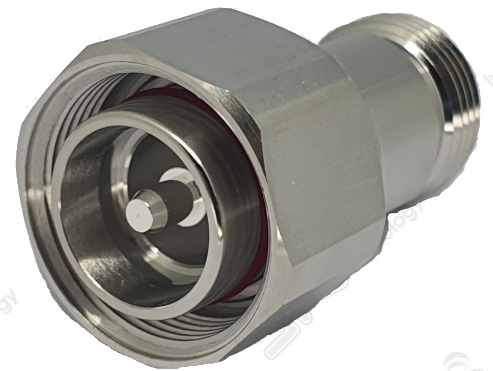


4.3 10 Male to N Female Adaptor

P.N. : BO4-A1206-03

Electrical specification

Item	Specification
Frequency range	DC ~ 6 GHz
Impedance (Nominal)	50Ω
Return loss (Max)	- 23dB Max
Insertion Loss	-0.2 dB Max.
Connector type	4.3 10 Male – N Female
PIMD	155 dBc Min (43dBm@2Tone)



Material specification

Item	Specification
Body	Brass / Tri-Alloy plating
Center contact (pin)	Brass, Be-cu / Ag plating
Insulator	PTFE
Temperature rating	-45 ~ + 85°C

